

Ruwac USA Industrial Vacuums

WNS Series

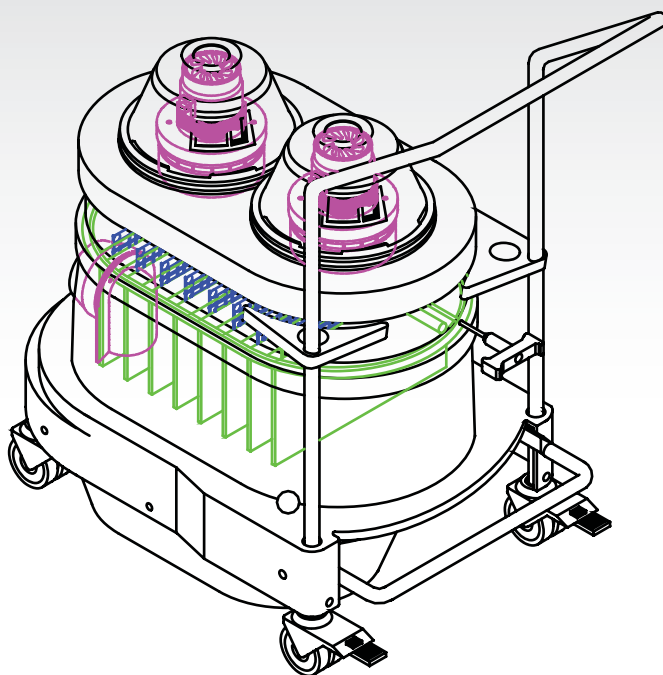
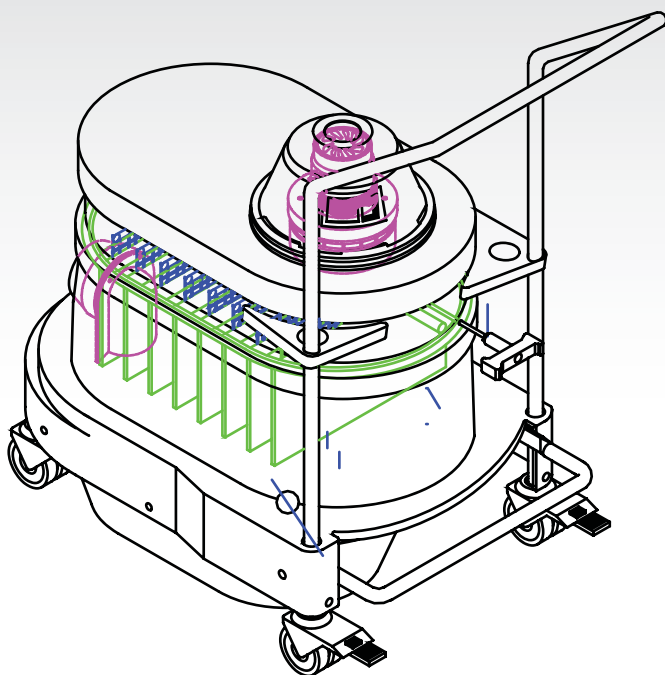
Parts Manual

Model No.

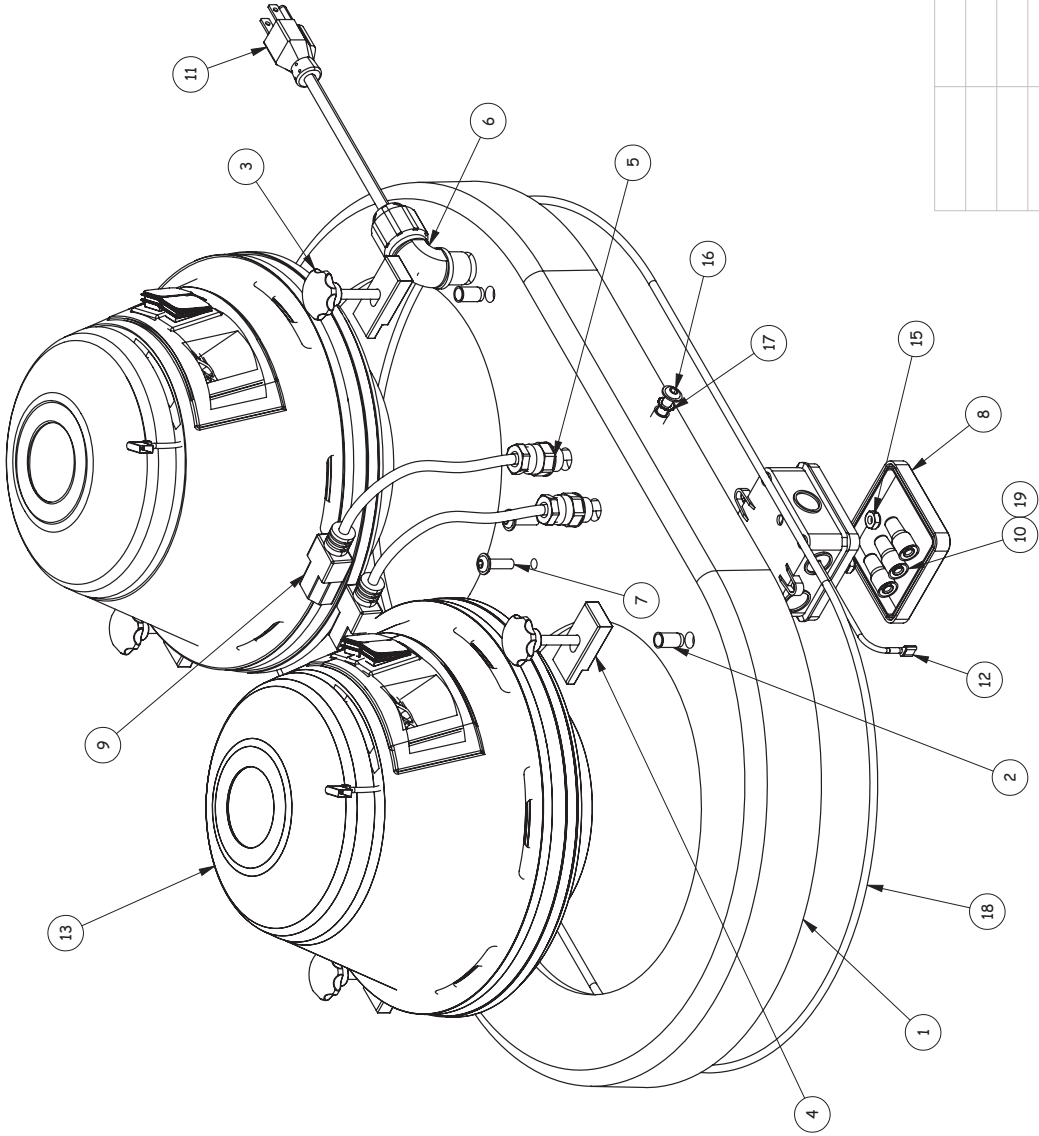
Serial No.

Filter No.

Start-Up Date



REV	DESCRIPTION	DATE	NAME
M	ECO# 789	3/17/11	DJS
N	ECO# 843	6/9/11	DJS
P	ECO# 1066	9/9/14	JMS



ITEM NO.	PART NO.	DESCRIPTION	QTY.
1	90223WNS	Motor Deck, Red, WNS 2 Motor	1
2	34817A	M6 Blind Pem	6
3	26603	M6 Motor Hold Down Knob	4
4	20020	Hold Down Bracket, WNS Motor	4
5	34960	PG 09 Cable Grip Polyamid	2
6	34961	Strain Relief, 90deg, 1/2", Black	1
7	34817	M6x20 Allen Head Screw	3
8	32999	Junction Box, Grey	1
9	25210	Female IEC Plug	2
10	21092	WIRE NUT, GAS EX, CRIMP ON	3
11	2005531	Power Cord, 12/3 SJO, Molded Plug (Removed for 220v)	1
12	270179KIT-WNS	Ground, Part of Wire Kit for WNS	1
13	27000A240	Motor Head Assembly, 240V, 1000 Watt	2
14	27001A	Motor Head Assembly, 120V, 1000 Watt	2
15	34876	M6 Lock Nut, Zinc	2
16	3481701	M6x25 Allen Head Screw	2
17	25000	1/4" External Star Washer	2
18	31376	Gasket, Round, 3/16 Dia	1
19	21092-1	INSULATOR, GAS EX, BRASS	3

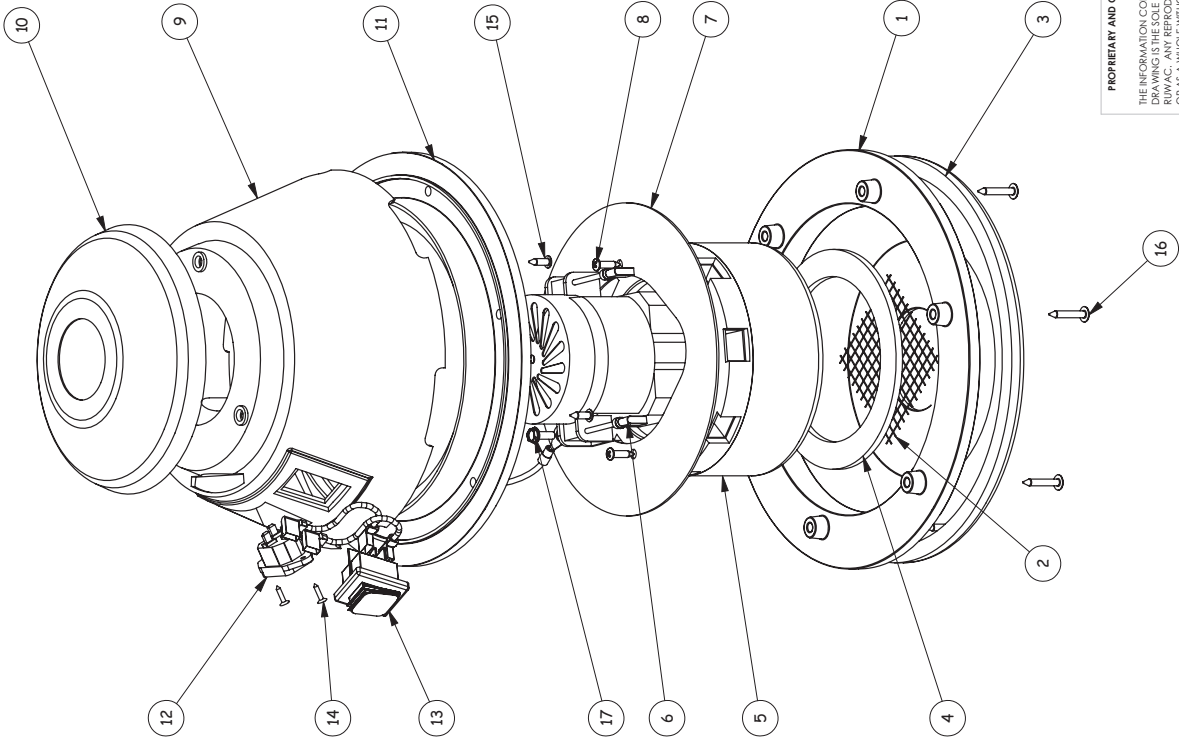
UNLESS OTHERWISE SPECIFIED:		DATE	NAME
DIMENSIONS ARE IN INCHES		9/9/14	JMS
TOLERANCES:			
FRACTIONAL: 1/16"			
ANGULAR: MATCH 30° BEND ± 30°			
HOLE POSITION: ± 0.015"			
THREE PLACE DECIMAL: ± 0.030			
G.A.			
COMMENTS:			
BREAK SHARP EDGES			
MATERIAL			
FINISH			
NEXT ASSY			
USED ON			
APPLICATION			

PROPRIETARY AND CONFIDENTIAL
THE INFORMATION CONTAINED IN THIS DRAWING IS THE PROPERTY OF RUMAC. ANY REPRODUCTION IN PART OR AS A WHOLE WITHOUT THE WRITTEN PERMISSION OF RUMAC IS PROHIBITED.

DRAWN		CHECKED	DATE	NAME
			9/9/14	JMS
ENG APPR.				
MFG APPR.				
G.A.				
COMMENTS:				
SEE BOM				
--				
90223WNSA-220				
90223WNSA				
SIZE		DWG. NO.	REV	
B		000E0029US	P	
SCALE: 1:3		WEIGHT:	SHEET 1 OF 1	

54 Winter St.
Holyoke, Ma. 01040
TITLE:
WNS MOTOR
DECK ASM

REV. DESCRIPTION			DATE	NAME
REV.				



ITEM NO.	PART NUMBER	DESCRIPTION	QTY.
1	27001	Motor Head, Aluminum	1
2	8021	Protection Screen, Motor Head	1
3	27004	Motor Head Gasket, WNS	1
4	2509825	MOTOR HEAD GASKET	1
5	116549-13	Motor, 2 Stage, Bi-Pass, 1200W, 240V	1
6	31715	Terminal, 90deg, 16-14 Gauge, Blue	2
7	27007	Separator Plate, WNS Motor Head	1
8	25064	#8x 5/8 Pan Head Screw	2
9	27014	Motor Housing, Single Motor	1
10	27015	Housing Cover, Single Motor	1
11	8004	Support Ring for Single Motor	1
12	25211	Male TEC Plug	1
13	27017	Rocker Switch, 1000/1200watt	1
14	27011	#6x 1/2 Sharp Point Screw	2
15	27012	#8x 1/2 Pan Head Screw	3
16	27003	#8-2 Phillips Pan Head, Zinc	6
17	32989	#10-16 x 5/8 Hex Washer Tek Screw	1
18	279179KIT-WNS	WNS WIRE KIT, SEE 000K0058US (NO REV)	1

UNLESS OTHERWISE SPECIFIED:		DATE		NAME	
DIMENSIONS ARE IN INCHES		3/27/09		D.J.S.	
TOLERANCES:		DRAWN		CHECKED	
FRACTIONAL: 1/16"					
ANGULAR: MATCH 3/8" BEND ±.30					
HOLE POSITION: ±.005					
THREE PLACE DECIMAL ±.020					
		ENG APPR.		MFG APPR.	
		G.A.			
BREAK SHARP EDGES					
MATERIAL					
FINISH					
USED ON					
NEXT ASSY					
APPLICATION					

COMMENTS:		27000A240		REV	
				A	
				SCALE: 1:3	
				WEIGHT:	
				SHEET 1 OF 1	

54 Winter St.
Holyoke, Ma. 01040

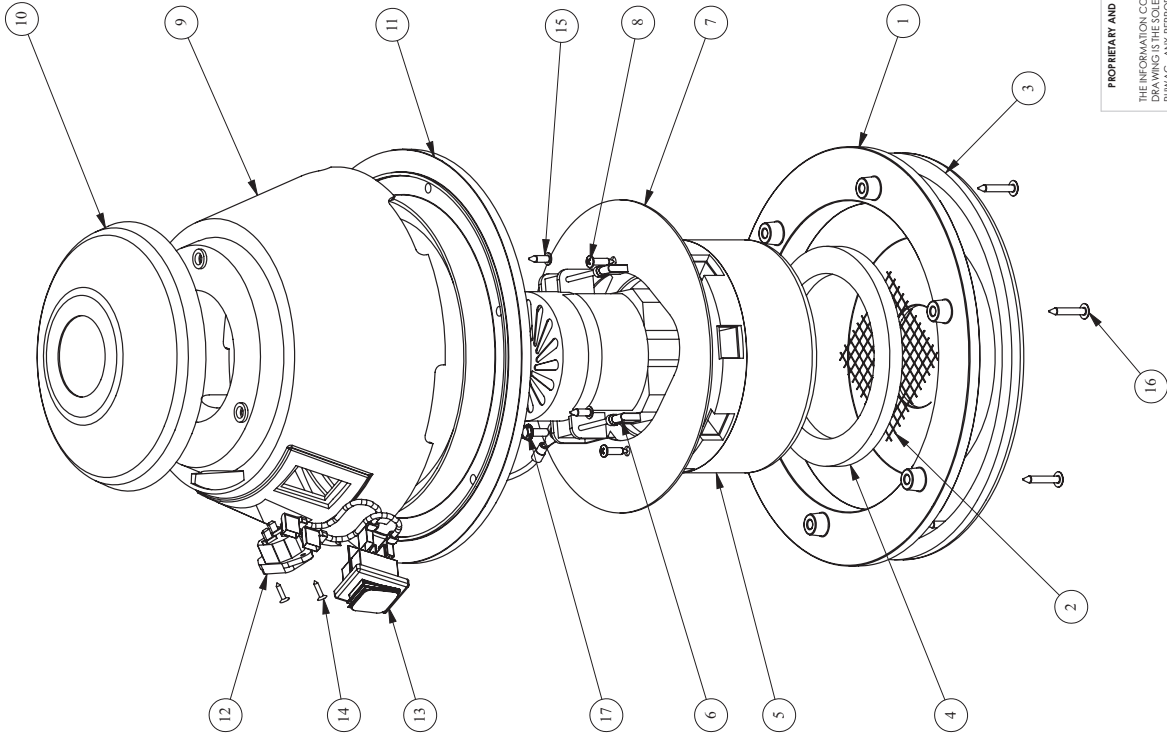
TITL: 220V MOTOR HEAD ASM
27000A240

SIZE DWG. NO. 000 E 0222 US

PROPRIETARY AND CONFIDENTIAL

THE INFORMATION CONTAINED IN THIS DRAWING IS THE PROPERTY OF RUMAC. ANY REPRODUCTION IN PART OR AS A WHOLE WITHOUT THE WRITTEN PERMISSION OF RUMAC IS PROHIBITED.

REVISIONS			
REV.	DESCRIPTION	DATE	NAME



ITEM NO.	PART NUMBER	DESCRIPTION	QTY.
1	27001	Motor Head, Aluminum	1
2	8021	Protection Screen, Motor Head	1
3	27004	Motor Head Gasket, WNS	1
4	250981JR	MOTOR HEAD GASKET	1
5	27000	Motor, 2 Stage, Bi-Pass, 1200W, 120V	1
6	31715	Terminal, 90deg, 16-14 Gauge, Blue	2
7	27007	Separator Plate, WNS Motor Head	1
8	25064	#8x 5/8 Pan Head Screw	2
9	27014	Motor Housing, Single Motor	1
10	27015	Housing Cover, Single Motor	1
11	8004	Support Ring for Single Motor	1
12	25211	Male IEC Plug	1
13	27017	Rocker Switch, 1000/1200watt	1
14	27011	#6x 1/2 Sharp Point Screw	2
15	27012	#8x 1/2 Pan Head Screw	3
16	27003	#8-2 Phillips Pan Head, Zinc	6
17	32989	#10-16 x 5/8 Hex Washer Tek Screw	1
18	270179KIT-WNS	WNS WIRE KIT, SEE 000K0058US (NO REV)	1

UNLESS OTHERWISE SPECIFIED:		DATE		NAME	
DIMENSIONS ARE IN INCHES		3/27/09		D.J.S.	
TOLERANCES:		DRAWN		CHECKED	
FRACTIONAL: 1/16"					
ANGULAR: MATCH 30° BEND ± 30°					
HOLE POSITION: ± .005					
THREE PLACE DECIMAL ± .000					
		ENG APPR.		MFG APPR.	
		G.A.			
		COMMENTS:			
		BREAK SHARP EDGES			
		MATERIAL			
		FINISH			
		USED ON			
		NEXT ASSY			
		APPLICATION			

PROPRIETARY AND CONFIDENTIAL

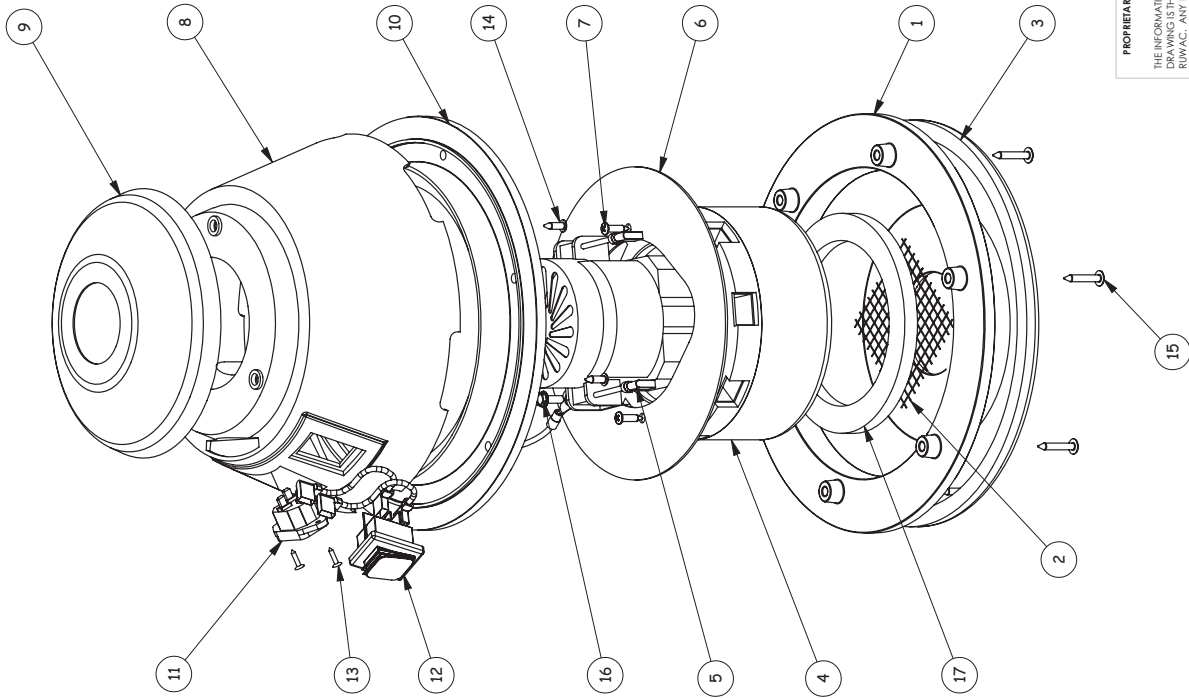
THE INFORMATION CONTAINED IN THIS DRAWING IS THE PROPERTY OF RUMAC. ANY REPRODUCTION IN PART OR AS A WHOLE WITHOUT THE WRITTEN PERMISSION OF RUMAC IS PROHIBITED.

SIZE		DWG. NO.		REV	
B		000 E 0223 US		A	
SCALE: 1:3		WEIGHT:		SHEET 1 OF 1	

54 Winter St.
RUMAC
Holyoke, Ma. 01040
TITLE:
110V MOTOR HEAD ASM
27000A

27000A

REVIEWS		
REV.	DESCRIPTION	DATE



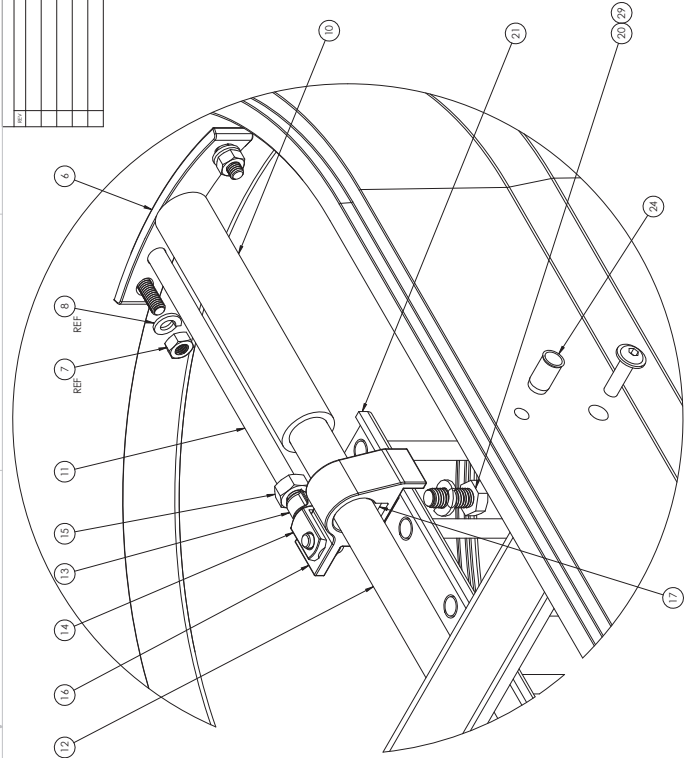
ITEM NO.	PART NUMBER	DESCRIPTION	QTY.
1	27001	Motor Head, Aluminum	1
2	8021	Protection Screen, Motor Head	1
3	27004	Motor Head Gasket, WNS	1
4	27002	Motor, 2 Stage, PD, 1000W, 120V	1
5	31715	Terminal, 90deg, 16-14 Gauge, Blue	2
6	27007	Separator Plate, WNS Motor Head	1
7	25064	#8x 5/8 Pan Head Screw	2
8	27014	Motor Housing, Single Motor	1
9	27015	Housing Cover, Single Motor	1
10	8004	Support Ring for Single Motor	1
11	25211	Male IEC Plug	1
12	27017	Rocker Switch, 1000/1200watt	1
13	27011	#6x 1/2 Sharp Point Screw	2
14	27012	#8x 1/2 Pan Head Screw	3
15	27003	#8-2 Phillips Pan Head, Zinc	6
16	32989	#10-16 x 5/8 Hex Washer Tek Screw	1
17	250981IR	MOTOR HEAD GASKET	1
18	270179KIT-WNS	WNS WIRE KIT, SEE 000K0058US (NO REV)	1

UNLESS OTHERWISE SPECIFIED:		DATE		NAME	
DIMENSIONS ARE IN INCHES		3/27/09		D.J.S.	
TOLERANCES:		DRAWN		CHECKED	
FRACTIONAL: 1/16"					
ANGULAR: MATCH 3/8" BEND ±.30					
HOLE POSITION: ±.005					
THREE PLACE DECIMAL ±.020					
				G.A.	
				COMMENTS:	
				27001A	
				SIZE DWG. NO.	
				B 000 E 0221 US	
				REV	
				A	
				SCALE: 1:3	
				WEIGHT:	
				SHEET 1 OF 1	

PROPRIETARY AND CONFIDENTIAL
THE INFORMATION CONTAINED IN THIS DRAWING IS THE PROPERTY OF RUMAC. ANY REPRODUCTION IN PART OR AS A WHOLE WITHOUT THE WRITTEN PERMISSION OF RUMAC IS PROHIBITED.

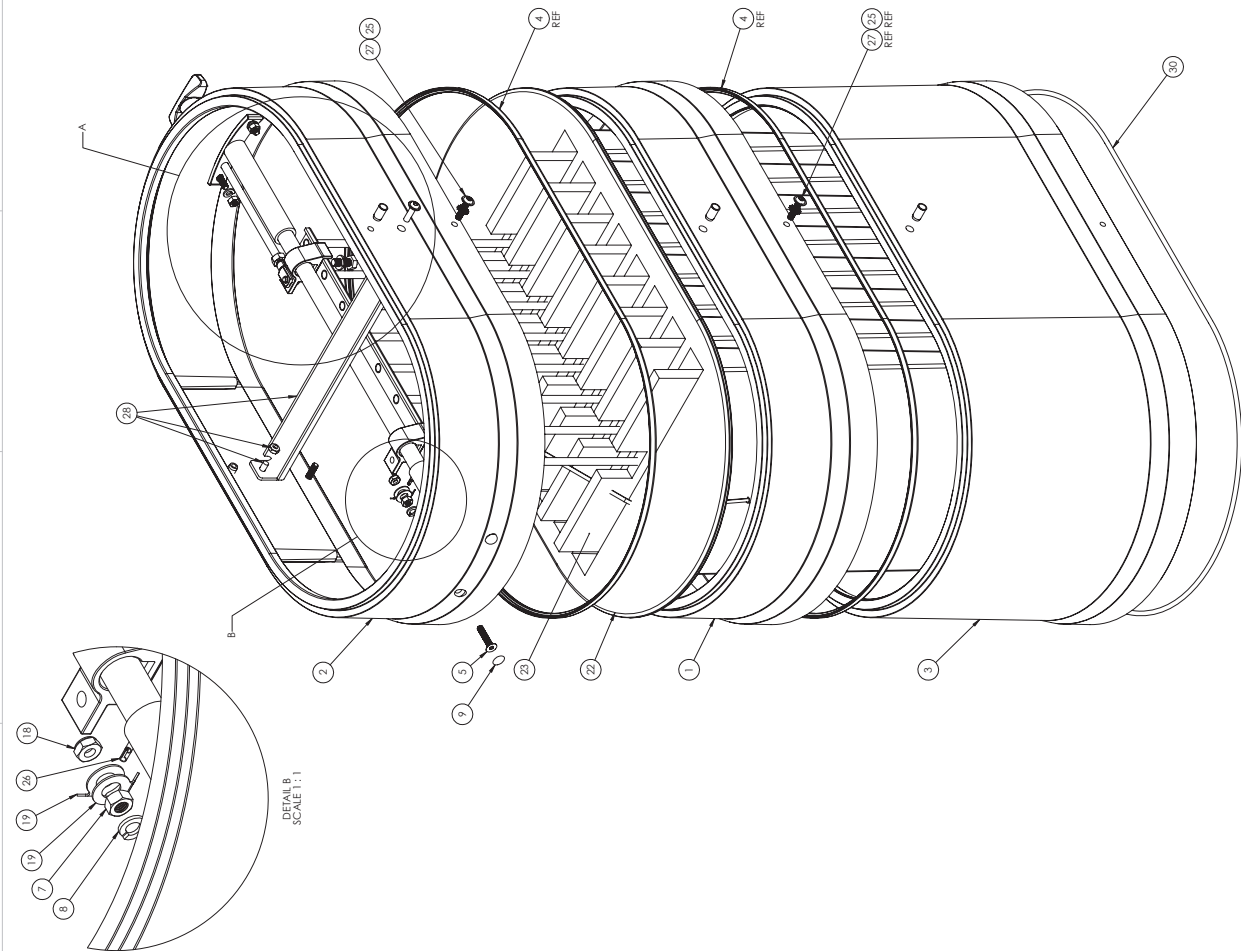
54 Winter St.
Holyoke, Ma. 01040
TITLE:
110V MOTOR HEAD ASM
27001A

REVISIONS		DATE	NAME
REV	DESCRIPTION		



ITEM NO.	PART NO.	DESCRIPTION	DRAWING NO.	QTY.
1	34823001	HOUSING SPACER, D1 SMALL, RED	0001 0057 US	1
2	34823002	HOUSING SPACER, D1 LRG, RED	0001 0057 US	1
3	34800001	HOUSING SPACER, D1 LRG, RED	0001 0057 US	1
4	3137746	GASKET, NITRILE SPONGE	0001 0057 US	2
5	34815	SCREW SOC FH M6 X 30	0001 0057 US	4
6	34806	SHAKER ROD MOUNTING SUPPORT	0001 0057 US	2
7	20040	NUT HEX M6	0001 0057 US	4
8	20039	WASHER LOCK M6	0001 0057 US	4
9	34871	PLASTIC PLUG, 4.5/13	0001 0057 US	4
10	34805	CLEAR HOSE, 3/4"ID	0001 0057 US	2
11	22565	SHAKER BAR W/ SWIVEL HANDLE	0001 0057 US	1
12	34804	MANUAL SHAKER BAR	0001 0057 US	1
13	34879	SPRING CLIP 6 X 12	0001 0057 US	1
14	25047	CLEVIS, 6 X 12, M8 FEM RHT	0001 0057 US	1
15	20044	HEX NUT M8, ZINC	0001 0057 US	1
16	34802	FILTER SLIDE GUIDE, PLASTIC	0001 0057 US	2
17	20045	NUT, SQUARE, M8	0001 0057 US	2
18	34876	M6 LOCK NUT	0001 0057 US	1
19	34998	GROUND CONNECTOR	0001 0057 US	2
20	25038	BOLT HEX M8 X 20	0001 0057 US	2
21	34807	FILTER SUPPORT WELDMENT 2.6M	0001 0057 US	1
22	30091	FILTER, 2.6M	0001 0057 US	1
23	30091F	FILTER INSERT, 2.6m	0001 0057 US	8
24	34817A	M6 BIND PEM	0001 0057 US	6
25	25000	WASHER EXT START 1/4"	0001 0057 US	4
26	34869	GROUND 2.6M FILTER TO DEFLECTOR	0001 0057 US	1
27	3481701	SCREW, SOC BH, FLANGED, M6-25	0001 0057 US	4
28	30095A	FILTER BAR SUPPORT ASST	0001 0057 US	1
29	34834	WASHER 3/16" LOCK M8	0001 0057 US	1
30	31376	GROUND 2.6M FILTER TO DEFLECTOR	0001 0057 US	1

DATE	10/20/14	SAWYER ST	REV	K
DESIGNED		HOYOS, AOS, 01040	SIZE	000 E 0042 US
CHECKED			SCALE	1:8 (WEIGHT)
APPROVED				
DATE	10/20/14	SAWYER ST		
DESIGNED		HOYOS, AOS, 01040		
CHECKED				
APPROVED				
DATE	10/20/14	SAWYER ST		
DESIGNED		HOYOS, AOS, 01040		
CHECKED				
APPROVED				



PROPERTY AND CONFIDENTIALITY
 THE INFORMATION CONTAINED HEREIN IS THE PROPERTY OF THE COMPANY AND IS NOT TO BE DISCLOSED OR REPRODUCED IN ANY MANNER WITHOUT THE WRITTEN PERMISSION OF THE COMPANY.

30091 A

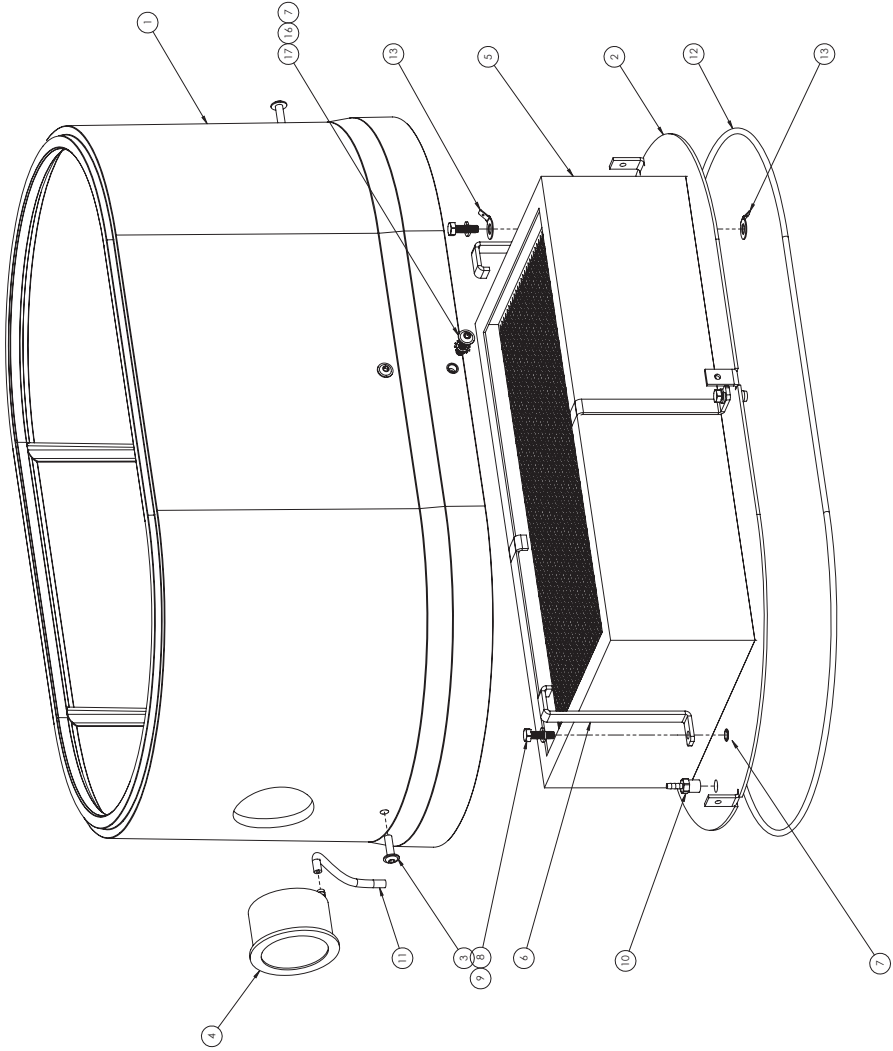
2.6M FILTER ASSEMBLY, MANUAL SHAKER, RED

000 E 0042 US

SCALE: 1:8 (WEIGHT)

SHEET 1 OF 1

REVISION		DATE	NAME
REV	DESCRIPTION		



ITEM NO.	PART NO.	DESCRIPTION	DRAWING NO.	QTY.
1	34820002	LRG HOUSING SPACER, D1-WS, HEPA, RED		1
2	34947	HEPA ADAPTER PLATE, D81	000M092US	1
3	34817	SCREW ILS SOC HD M6 X 20		4
4	25143	MINIHEL, WITH MNTG BTK 10" WC		1
5	35211	HEPA FILTER 40 SQ FOOT WSDS1		1
6	34949	HEPA HOLD DOWN BRACKET, WS		4
7	34817A	M6 BLIND FEM		6
8	32903	BOLT HEX M6-20, ZINC		4
9	20039	WASHER LOCK M6		4
10	25149	HOSE BARB, 1/25 X 1/25, STRAIGHT, BRASS		1
11	34800	HOSE CLEAR, 1/8" DIA		1
12	31376	GASKET, 3/16" ROUND		1
13	34998	GROUND CONNECTOR		2
14	34993	GROUND CABLE, 18GA, GREEN		2
15	34993	GROUND CABLE, 18GA, BLUE, FEM		2
16	20000	TERMINAL BLOCK, 18GA, 1/2"		2
17	3481701	SCREW, SOC BH FLANGED, M4-25		2

DATE		1/27/14	SAWYER ST.	REV	G
DESIGNED			HOVSEY, MRS. D1040	SCALE	1:2 INCHES
CHECKED					
APPROVED					
DATE		1/27/14			
DESIGNED					
CHECKED					
APPROVED					
DATE		1/27/14			
DESIGNED					
CHECKED					
APPROVED					
DATE		1/27/14			
DESIGNED					
CHECKED					
APPROVED					
DATE		1/27/14			
DESIGNED					
CHECKED					
APPROVED					
DATE		1/27/14			
DESIGNED					
CHECKED					
APPROVED					
DATE		1/27/14			
DESIGNED					
CHECKED					
APPROVED					
DATE		1/27/14			
DESIGNED					
CHECKED					
APPROVED					
DATE		1/27/14			
DESIGNED					
CHECKED					
APPROVED					
DATE		1/27/14			
DESIGNED					
CHECKED					
APPROVED					
DATE		1/27/14			
DESIGNED					
CHECKED					
APPROVED					
DATE		1/27/14			
DESIGNED					
CHECKED					
APPROVED					
DATE		1/27/14			
DESIGNED					
CHECKED					
APPROVED					
DATE		1/27/14			
DESIGNED					
CHECKED					
APPROVED					
DATE		1/27/14			
DESIGNED					
CHECKED					
APPROVED					
DATE		1/27/14			
DESIGNED					
CHECKED					
APPROVED					
DATE		1/27/14			
DESIGNED					
CHECKED					
APPROVED					
DATE		1/27/14			
DESIGNED					
CHECKED					
APPROVED					
DATE		1/27/14			
DESIGNED					
CHECKED					
APPROVED					
DATE		1/27/14			
DESIGNED					
CHECKED					
APPROVED					
DATE		1/27/14			
DESIGNED					
CHECKED					
APPROVED					
DATE		1/27/14			
DESIGNED					
CHECKED					
APPROVED					
DATE		1/27/14			
DESIGNED					
CHECKED					
APPROVED					
DATE		1/27/14			
DESIGNED					
CHECKED					
APPROVED					
DATE		1/27/14			
DESIGNED					
CHECKED					
APPROVED					
DATE		1/27/14			
DESIGNED					
CHECKED					
APPROVED					
DATE		1/27/14			
DESIGNED					
CHECKED					
APPROVED					
DATE		1/27/14			
DESIGNED					
CHECKED					
APPROVED					
DATE		1/27/14			
DESIGNED					
CHECKED					
APPROVED					
DATE		1/27/14			
DESIGNED					
CHECKED					
APPROVED					
DATE		1/27/14			
DESIGNED					
CHECKED					
APPROVED					
DATE		1/27/14			
DESIGNED					
CHECKED					
APPROVED					
DATE		1/27/14			
DESIGNED					
CHECKED					
APPROVED					
DATE		1/27/14			
DESIGNED					
CHECKED					
APPROVED					
DATE		1/27/14			
DESIGNED					
CHECKED					
APPROVED					
DATE		1/27/14			
DESIGNED					
CHECKED					
APPROVED					
DATE		1/27/14			
DESIGNED					
CHECKED					
APPROVED					
DATE		1/27/14			
DESIGNED					
CHECKED					
APPROVED					
DATE		1/27/14			
DESIGNED					
CHECKED					
APPROVED					
DATE		1/27/14			
DESIGNED					
CHECKED					
APPROVED					
DATE		1/27/14			
DESIGNED					
CHECKED					
APPROVED					
DATE		1/27/14			
DESIGNED					
CHECKED					
APPROVED					
DATE		1/27/14			
DESIGNED					
CHECKED					
APPROVED					
DATE		1/27/14			
DESIGNED					
CHECKED					
APPROVED					
DATE		1/27/14			
DESIGNED					
CHECKED					
APPROVED					
DATE		1/27/14			
DESIGNED					
CHECKED					
APPROVED					
DATE		1/27/14			
DESIGNED					
CHECKED					
APPROVED					
DATE		1/27/14			
DESIGNED					
CHECKED					
APPROVED					
DATE		1/27/14			
DESIGNED					
CHECKED					
APPROVED					
DATE		1/27/14			
DESIGNED					
CHECKED					
APPROVED					
DATE		1/27/14			
DESIGNED					
CHECKED					
APPROVED					
DATE		1/27/14			
DESIGNED					
CHECKED					
APPROVED					
DATE		1/27/14			
DESIGNED					
CHECKED					
APPROVED					
DATE		1/27/14			
DESIGNED					
CHECKED					
APPROVED					
DATE		1/27/14			
DESIGNED					
CHECKED					
APPROVED					
DATE		1/27/14			
DESIGNED					
CHECKED					
APPROVED					
DATE		1/27/14			
DESIGNED					
CHECKED					
APPROVED					
DATE		1/27/14			
DESIGNED					
CHECKED					
APPROVED					
DATE		1/27/14			
DESIGNED					
CHECKED					
APPROVED					
DATE		1/27/14			
DESIGNED					
CHECKED					
APPROVED					
DATE		1/27/14			
DESIGNED					
CHECKED					
APPROVED					
DATE		1/27/14			
DESIGNED					
CHECKED					
APPROVED					
DATE		1/27/14			
DESIGNED					
CHECKED					
APPROVED					
DATE		1/27/14			
DESIGNED					
CHECKED					
APPROVED					
DATE		1/27/14			
DESIGNED					
CHECKED					
APPROVED					
DATE		1/27/14			
DESIGNED					
CHECKED					
APPROVED					
DATE		1/27/14			
DESIGNED					
CHECKED					
APPROVED					
DATE		1/27/14			
DESIGNED					
CHECKED					
APPROVED					
DATE		1/27/14			
DESIGNED					
CHECKED					
APPROVED					
DATE		1/27/14			
DESIGNED					
CHECKED					
APPROVED					
DATE		1/27/14			
DESIGNED					
CHECKED					
APPROVED					
DATE		1/27/14			
DESIGNED					
CHECKED					
APPROVED					
DATE		1/27/14			
DESIGNED					
CHECKED					
APPROVED					
DATE		1/27/14			
DESIGNED					
CHECKED					
APPROVED					
DATE		1/27/14			
DESIGNED					
CHECKED					
APPROVED					
DATE		1/27/14			
DESIGNED					
CHECKED					
APPROVED					
DATE		1/27/14			
DESIGNED					
CHECKED					
APPROVED					
DATE		1/27/14			
DESIGNED					
CHECKED					
APPROVED					
DATE		1/27/14			
DESIGNED					
CHECKED					
APPROVED					
DATE		1/27/14			
DESIGNED					
CHECKED					
APPROVED					
DATE		1/27/14			
DESIGNED					
CHECKED					
APPROVED					
DATE		1/27/14			
DESIGNED					
CHECKED					
APPROVED					
DATE		1/27/14			
DESIGNED					
CHECKED					
APPROVED					
DATE		1/27/14			
DESIGNED					
CHECKED					
APPROVED					
DATE		1/27/14			
DESIGNED					
CHECKED					
APPROVED					
DATE		1/27/14			
DESIGNED					
CHECKED					
APPROVED					
DATE		1/27/14			
DESIGNED					
CHECKED					
APPROVED					
DATE		1/27/14			
DESIGNED					
CHECKED					
APPROVED					
DATE		1/27/14			
DESIGNED					
CHECKED					
APPROVED					
DATE		1/27/14			
DESIGNED					
CHECKED					
APPROVED					
DATE		1/27/14			
DESIGNED					
CHECKED					
APPROVED					
DATE		1/27/14			
DESIGNED					
CHECKED					
APPROVED					
DATE		1/27/14			
DESIGNED					
CHECKED					
APPROVED					
DATE		1/27/14			
DESIGNED					
CHECKED					
APPROVED					
DATE		1/27/14			
DESIGNED					
CHECKED					
APPROVED					
DATE		1/27/14			
DESIGNED					
CHECKED					
APPROVED					
DATE		1/27/14			
DESIGNED					

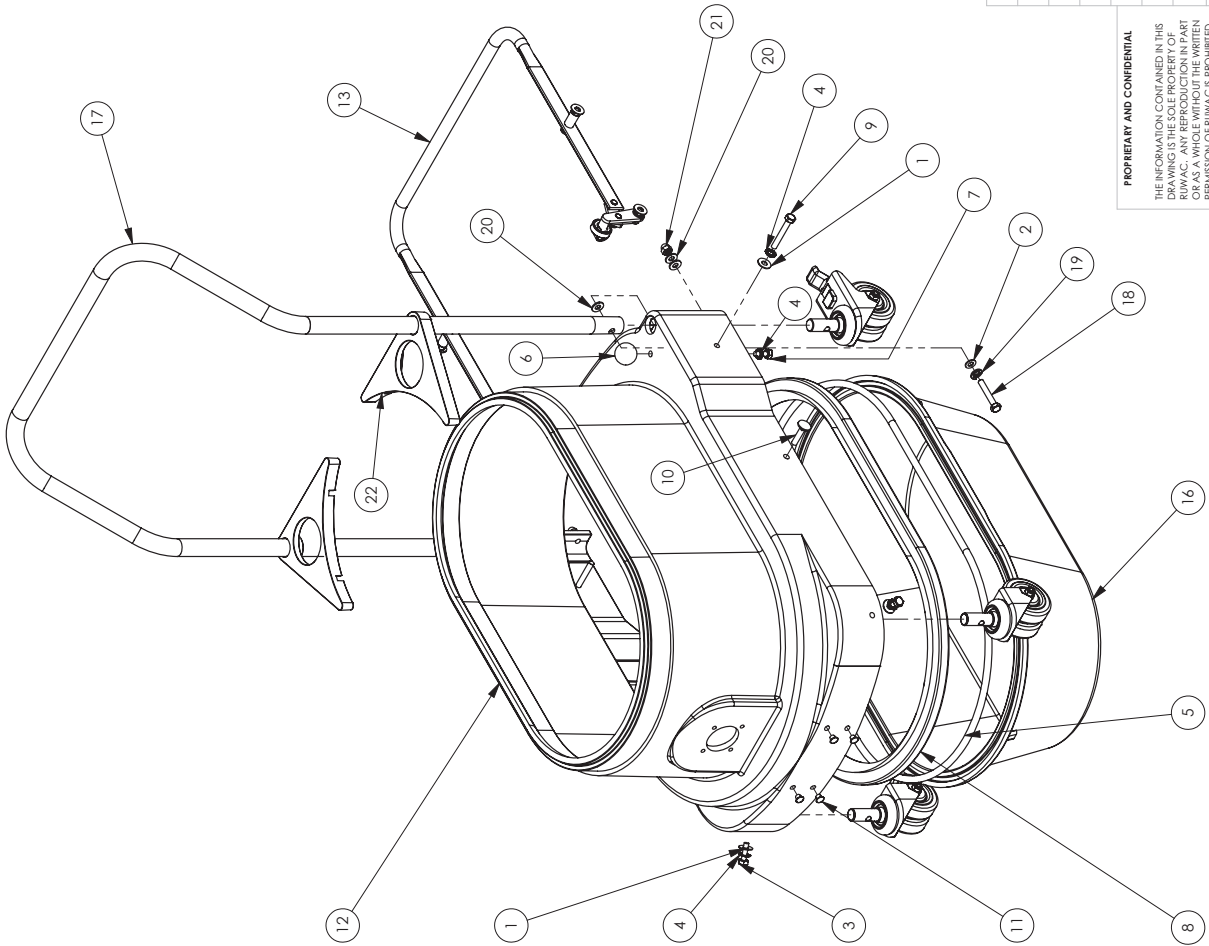
REVISIONS			
REV.	DESCRIPTION	DATE	NAME
I	E.C.O. #777	8/30/10	D.J.S.
J	E.C.O. #960, #1007	8/12/13	D.J.S.

DUST PAN LEVER ASSEMBLY DWG.# 000 E 0015 US

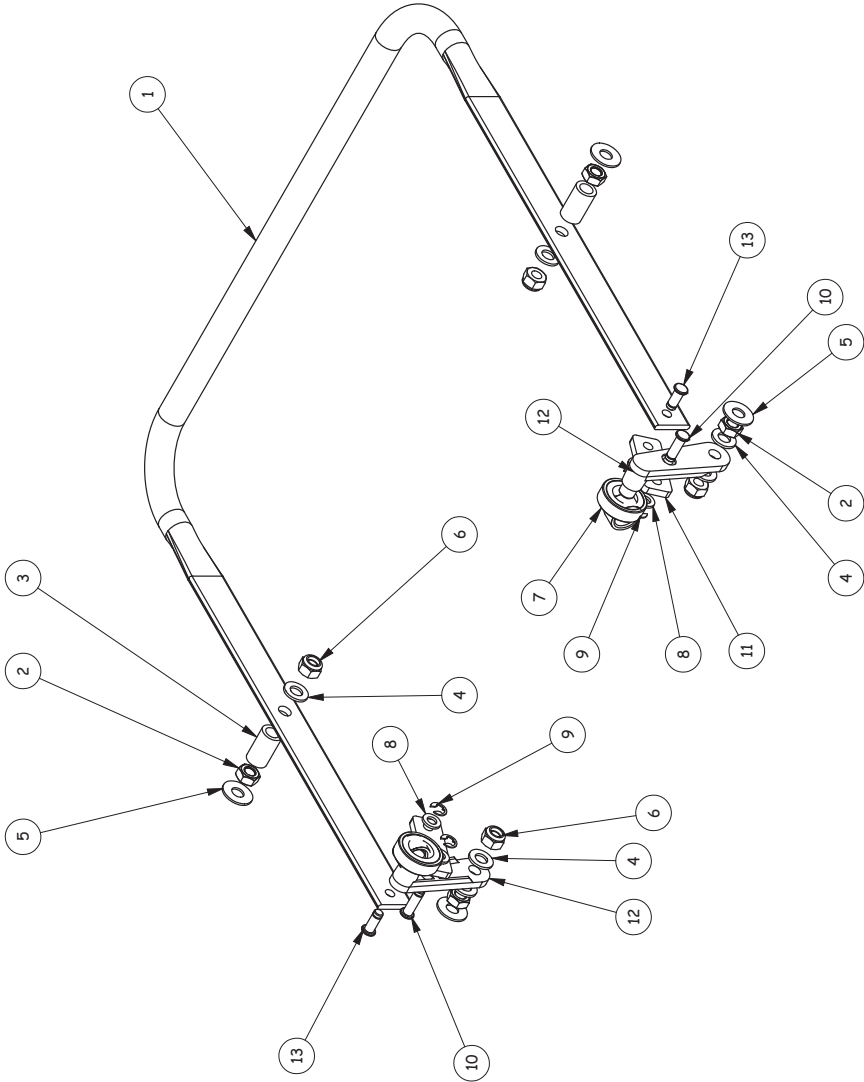
ITEM NO.	PART NO.	DESCRIPTION	QTY.
1	34882	M8 Thin Flat Washer, 8.4x20x1.3	6
2	25061	M8 FLAT WASHER	2
3	25054	M8x25 Hex Bolt, Zinc	2
4	25037	M8 External Washer, Zinc	5
5	2509865	Gasket, Round, 10mm Dia. x 68.5" Long	1
6	25060	Knob, Black,8mm	1
7	25038	M8x20 Hex Cap, Zinc	1
8	20070	Gasket, Dust Pan/Lower Housing, Profile	1
9	34811	M8x55 Hex Head Bolt	2
10	25053	Carriage Bolt, M8x35	2
11	22120	Plug, 8mm, Black	4
12	34808	Lower Housing, Red	1
13	20010A	D1 DUST PAN LEVER ASM	1
14	25084	CASTER,DUAL,SWIVEL,75MM	2
15	25085	CASTER,DUAL,FIXED,75MM WITH BRAKE	2
16	34813	Dust Pan, 35 Liter, Red	1
17	25080	DS1/WS2 PUSH BAR	1
18	34810	M8x50 Hex Head Bolt	2
19	20050	M8 SPLIT LOCK WASHER, ZINC	2
20	200190	WASHER, M8, NYLON	6
21	32927	ACORN NUT, M8, ZINC	2
22	32039	Handle Support, Plastic	2

UNLESS OTHERWISE SPECIFIED:	DATE	NAME	54 Winter St. Holyoke, Ma. 01040
DIMENSIONS ARE IN INCHES	2/10/03	D.J.S.	
FRACTIONAL 1/16"			
ANGULAR TACH 43° BEND ±.30			
3 PLACE DECIMAL ±.030			
THREE PLACE DECIMAL ±.030			
Q.A.			
BREAK SHARP EDGES			
MATERIAL			
FINISH			
USED ON			
APPLICATION			
34808A			
SIZE	DWG. NO.	REV	
B	000 E 0104 US	J	
SCALE: 1:7	WEIGHT:	SHEET 1 OF 1	

PROPRIETARY AND CONFIDENTIAL
THE INFORMATION CONTAINED IN THIS DRAWING IS THE PROPERTY OF RUMAC. ANY REPRODUCTION IN PART OR AS A WHOLE WITHOUT THE WRITTEN PERMISSION OF RUMAC IS PROHIBITED.



REVIEWS			
REV.	DESCRIPTION	DATE	NAME
I	ECO. # 770	8/11/10	D.J.S.



ITEM NO.	PART NO.	DESCRIPTION	QTY.
1	20010	Dust Pan Lever	1
2	20044	M8 Hex Nut, Zinc	4
3	34812	PVC Spacer 15/16" Long	2
4	25061	M8 FLAT WASHER	6
5	34882	M8 Thin Flat Washer, 8.4x20x1.3	4
6	30029	M8 LOCK NUT, ZINC	4
7	34853	Dust Pan Lever Bearing	2
8	25067	M6 Flat Washer	4
9	34923	C Spring Clip, Zinc	4
10	34922	Pin, D6x19mm	2
11	20027	Flat steel Pivot, 20x5x45mm	2
12	34852	Dust Pan Tension Lever	2
13	34921	Pin, D6x15	2

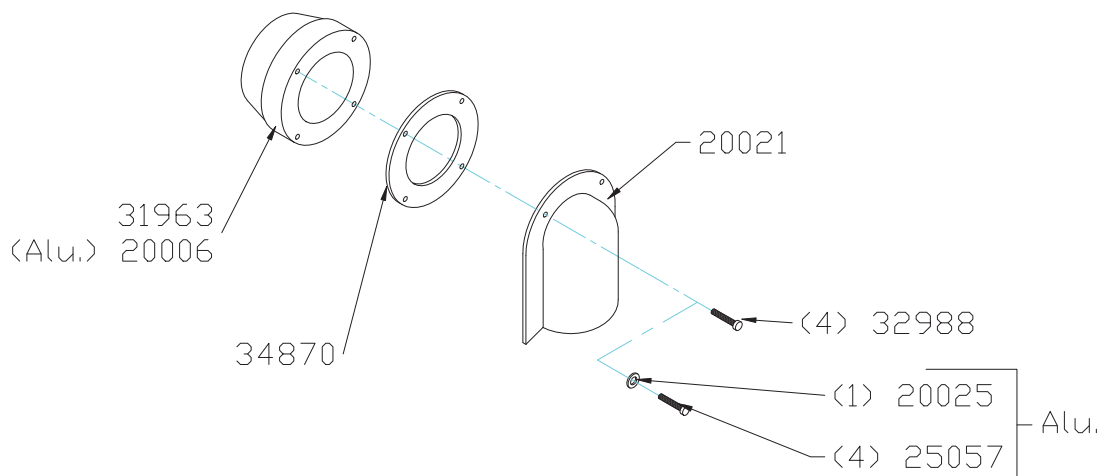
UNLESS OTHERWISE SPECIFIED:		DATE	NAME
DIMENSIONS ARE IN INCHES		8/2/01	D.J.S.
TOLERANCES:		DRAWN	
FRACTIONAL ± 1/16"		CHECKED	
ANGULAR: MATCH ± 30°		ENG APPR.	
HOLE POSITION ± .005		MTG APPR.	
THREE PLACE DECIMAL ± .000		G.A.	
BREAK SHARP EDGES			
MATERIAL	---	COMMENTS:	
FINISH	---	20010A	
NEXT ASSY	USED ON	SIZE DWG. NO. REV	
APPLICATION		B	000 E 0015 US I
		SCALE: 1:3 WEIGHT: SHEET 1 OF 1	

54 Winter St.
rwac
Holyoke, Ma. 01040

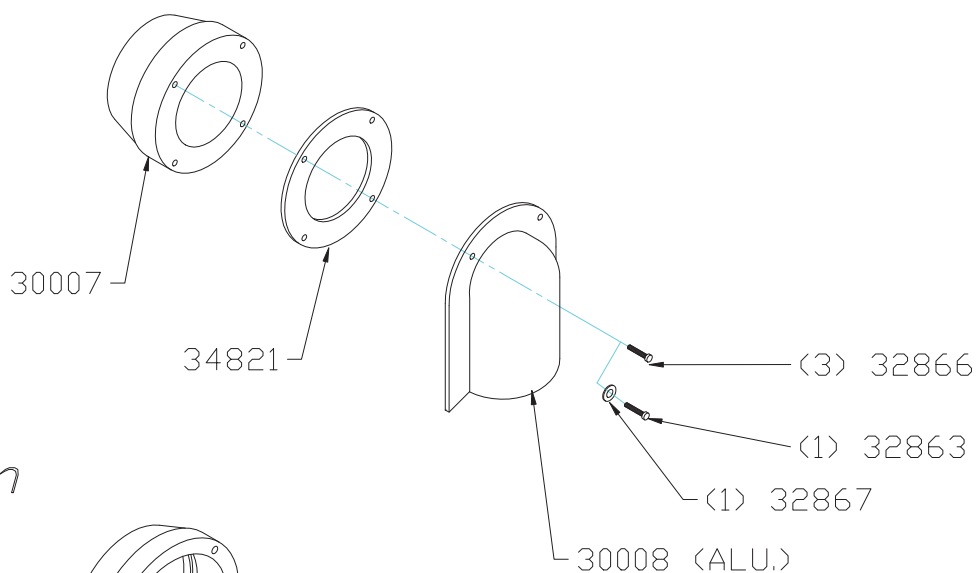
D1 DUST PAN LEVER ASM

PROPRIETARY AND CONFIDENTIAL
THE INFORMATION CONTAINED IN THIS DRAWING IS THE PROPERTY OF RWAC. ANY REPRODUCTION IN PART OR AS A WHOLE WITHOUT THE WRITTEN PERMISSION OF RWAC IS PROHIBITED.

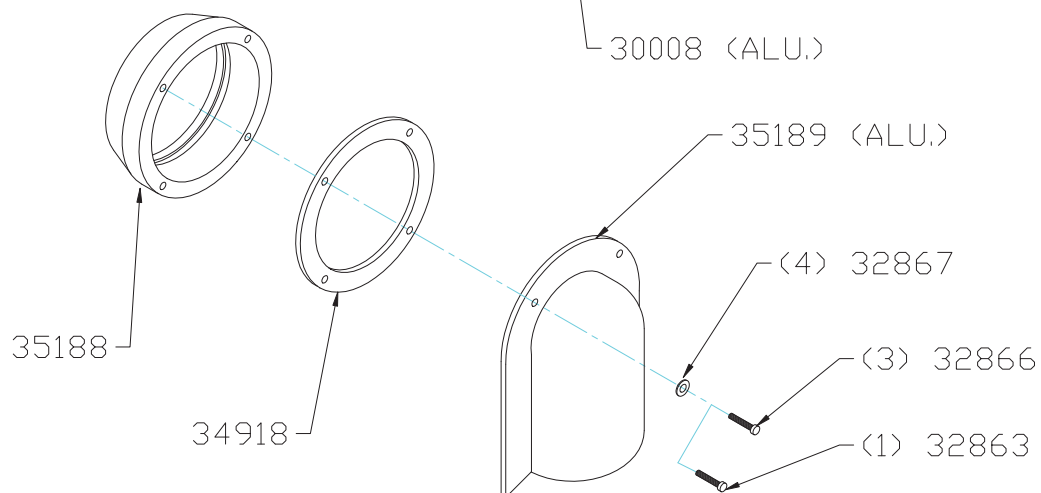
50mm



70mm



100mm



Ruwac

54 Winter Street
Holyoke, MA 01040, USA

50mm, 70mm, & 100mm INLET ASSEMBLY

REV

D.W.N. D.J.S.

DATE:

6-11-03

50mm INLET

PART NUMBER	DESCRIPTION	QTY
31963	INLET,50MM, GFK BLACK PLASTIC	1
20006	INLET,50MM,ALUMINUM	1
34870	GASKET 50MM INLET	1
20021	INLET DEFLECTOR,50MM,METAL	1
32988	#8 X 1 PHIL TRUSS HEAD,ZINC	4
20025	WASHER,STAR LOCKING,M4	1
25057	M4X20 SOCKET SCREW CAP	4

70mm INLET

30007	INLET,70MM,ALUMINUM	1
34821	GASKET,70MM INLET	1
30008	DEFLECTOR,70MM,ALUMINUM	1
32866	M5-.8X30 SOCKET CAP,ALLEN HEAD	3
32863	M5-.8X20 SOCKET CAP SCREW	1
32867	M5 EXT TOOTH LOCK WASHER ZINC	1

100mm INLET

35188	INLET,100MM,ALUMINUM	1
34918	GASKET,100MM INLET	1
35189	DEFLECTOR,100MM,ALUMINUM	1
32867	M5 EXT TOOTH LOCK WASHER ZINC	4
32866	M5-.8X30 SOCKET CAP,ALLEN HEAD	3
32863	M5-.8X20 SOCKET CAP SCREW	1